

# SEIBERG

The new  
education move





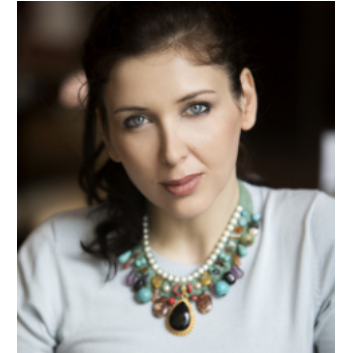
## SCHOOL OF SEIBERG

- Elementary School
- Middle School
- Art School
- Summer school
- Weekend sports and creativity school
- Cybernetics education center
- Business and Diplomacy education center
- Science and Medical education center
- Design and Engineering education center
- Fencing school
- Gymnastics hall
- Volleyball gymnasium
- Soccer and Basketball Gymnasiums
- School swimming pool
- School Fitness center
- Ballet and Yoga hall
- Aquaponics center for growing healthy food education
- School library and Theater
- Professional MasterChef cooking classroom
- School Restaurants
- Bookshop for foreign languages
- Dry cleaning
- School offices
- School medical rooms
- Post pickup point

## The School of Seiberg

Memory comes from experience,  
not memorization.

## A LETTER FROM CREATOR



Break down the word EDUCATION into letters.  
Can you create a new word ?

### CAUTIONED !

Hey ! ... what a magical way to uncover the core meaning of this word ... isn't it ?

In education we have been CAUTIONED.  
Cautioned about how the world works, history, society, topics and subjects  
presented in school. CAUTIONED about upcoming tests, cautioned about  
what to do and what not to do. Cautioned about how to live a life.

### INSPIRED !

No.... It is not about one word. It is about the way we hire teachers.

Let ´s teach children Game Programming,  
Let´s inspire them about the new aerodynamics of the BMW  
Let´s amaze them by Science Photography  
Let´s inspire them to study about history, the world news,  
Let´s challenge them with tests from History, World News or Creativity.

Who can teach these subjects? That is a task for Seiberg school.

To INSPIRE, is all we accept from teachers and future employees of SEIBERG.

To inspire is the reason, process and conclusion when working with children,  
which I am looking for.

Welcome to Seiberg.

**Miriam Itahashi**  
Creator of Seiberg

## Your Child & Entry to Seiberg

At the age of 6, children will enter the Level 1 of Elementary School. Elementary school is divided into 3 levels. In the 1st level, children will learn basic competences:

Reading, Writing and Mathematics while exploring the world of specialized subjects and topics in 2nd and 3rd language.

### Subjects:

Art & Design, Chemistry, Chess, Craftsman creativity,

Communication, Cooking, Computers & Programming,

Design & Architecture, Drawing & Sculpture, Event preparation,

Fencing, Fun Constructions, Geography, Guest of the week,

Gymnastics, History, Mathematics & Finance,

Music and Dance, Nature, Photography, Reading & Writing

Sport & Games, Theater, Trip of the month, Travel studies,



## ELEMENTARY SCHOOL

### Level GRADE 1 to 3

**Age 6 - 9 years old**

#### Morning schedule in Slovak and German language

Reading, Writing, Math, Science, Art, Sports, English, 3rd language

#### Afternoon program in English & 3rd foreign language

Spanish, Chinese, Russian, Korean

## At the age of 10 children will choose their faculty of their passion & talent

At the second level of Elementary school, parents and teachers will agree on the faculty for their child, based on the child's talent and passion, shown during the first level of Elementary School.

From the age of 10, child will enter one of 4 faculties. Even though the children will start taking specialized classes of their faculty, they will still meet friends or classmates from other faculties during general subjects.

The group of their classmates will be selected by the level of each child so that his/her speed matches the speed of the classmates. It might happen, that child will be attending English language of his/her own age level, but Programming lesson of 2 levels higher.

So it might happen, that Business major children might meet Cybernetics major classmates on Mathematics, Science faculty classmates on Chinese language and Business major classmates in Sports Class.

Meeting and making many friends will be amazing for children that can show their unique talents to the friends from different faculty and can increase their self-confidence and understanding that we all are special and good at something else.

There will be only 14 children in each Faculty per year. The attention to each child and it's talents is one of the greatest, provided in the country.

# ELEMENTARY SCHOOL

## Level GRADE 4 to 9

Age 10 - 15 years old

**FACULTY of CYBERNETICS  
& Modern Technologies**

**FACULTY of BUSINESS  
& Diplomacy**

**FACULTY of SCIENCE  
& Medicine**

**FACULTY of DESIGN  
& Engineering**



## For children talented in IT

Seiberg prepared a study plan for children that wish to elevate their knowledge in IT, Programming and Graphic Design.

The Faculty is suitable for children with passion for any kind of new Game or Robot which they learned how to re-program at their early age. Children will enter the faculty at the age of 10 and finish at the age of 16.

During the 6 years of specialized education, director of Faculty of Cybernetics will cooperate with the team of professionals and teachers to introduce the most important software programs, programming languages and graphic design software, to excite children to enter the real world of IT at this early age.

Children will meet friends from other faculties during general subjects like: Languages, Mathematics, Science and Sports.

After finishing the last year of Seiberg faculty of Cybernetics and Modern Technologies, children can start preparing for the university of their choice. Students from Faculty of Cybernetics and Modern Technologies will have higher chance to enter technically oriented University or University with majors such as:

Mathematics, Physics, Graphic Design, Product Design, Computer Science, Photography, Animation, Mobile Development, Software Design and Engineering, Programming, Electronics Engineering, Science & Technology Database management, Internet security, Informatics, Digital Humanities, Computer Engineering Environmental Management, Environmental Science, Engineering Management etc.

# FACULTY of CYBERNETICS & Modern Technologies

**Grade 4 to 9**

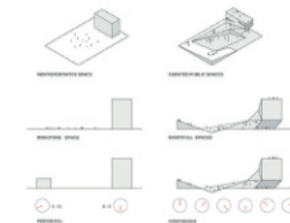
**Age 10 - 15 years old**

### Specialized studies

Programming & Computer science, Game Design, 3D-Design, Photoshop, Sketch up, Extended Mathematics, Extended Physics, Photography, Search Engines

### Compulsory

Reading, Writing, Math, Science, Sports, English, 3rd language



## For children passionate about Science & Medicine

Program at Seiberg is taught by real scientists and medical doctors that come to teach and inspire children about human body, health and science.

Children that are interested in the nature, animals, plants, humans are usually sensitive creatures with the deep soul. Their path in Seiberg will be exploring the world of Biology and Chemistry not only to prepare for their University, but also to gain a confidence in knowing and understanding how human body and mind works.

Children will enter the faculty at the age of 10 and finish at the age of 16. During the 6 years of specialized education, director of Faculty of Science and Medicine will cooperate with the team of professionals to explore the potential of Science curriculum to create a passionate community that examines the goals of Science for our world. Children will meet friends from other faculties during general subjects like :  
Languages, Mathematics, Science and Sports.

After finishing the last year of Seiberg faculty of Science and Medicine, at the age of 16, children can start preparing for the university of their choice. Students from Faculty of Science and Medicine will have higher chance to enter Medical University or University with majors such as:

Science, Medicine, Biology, Bioengineering, Human Biology, Chemical Engineering, Chemistry, Physical Therapy, Science Management, Health Science Management, Neuroscience, Pharmacology, Biomedical computation, Psychology, Earth Science, Geography & Ecology, Laboratory Science, Molecular & Cell Biology, Genetics, Microbiology, etc.

## FACULTY of SCIENCE & Medicine

**Grade 4 to 9**

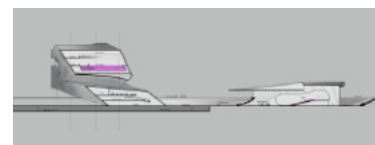
**Age 10 - 15 years old**

### Specialized studies

Biology, Chemistry, Organic Chemistry, Modern Medicine, Chinese & Alternative Medicine, Psychology, Science

### Compulsory

Reading, Writing, Math, Science, Sports, English, 3rd language



## For children into Design & Creativity

Painting and Creativity can be converted into thousands of professions. Seibergs inspires children for creativity that results in artistic works, technological advancements and new product creations.

Director of Faculty of Design & Engineering hires Architects, Designers and Building professionals to work with children on their daily tasks. Opening the world of architecture and design to children incorporates hundreds of visits to galleries, design exhibitions, manufacturers, art shows, different countries and cities around the world.

Seiberg is creating one of the largest elementary school Architecture ateliers where children work on their vision for the future design.

Children will enter the faculty at the age of 10 and finish at the age of 16. They will meet friends from other faculties during general subjects like: Languages, Mathematics, Science and Sports.

After finishing the last year of Seiberg faculty of Design and Engineering, children can start preparing for the university of their choice, with higher chance to enter to Universities with majors such as:

Architecture, Design, Physics, Mathematics, Science and Technology, Photography, Animation, Product Design, Mechanical Design, Mechanical Engineering, Production Management Civil & Environmental Engineering, Energy Resources Engineering, Engineering Physics, Chemistry & Material Science, Jewelry design & Craftsmanship, Car Design, Landscape Design, Art Conservation Aeronautics and Astronautics Applied and Engineering Physics, Geological Sciences.

## FACULTY of DESIGN & Engineering

**Grade 4 to 9**

**Age 10 - 15 years old**

### Specialized studies

Car Design, Car construction, Architecture, Building technologies, Aerospace, AutoCAD, CorelDraw, Lumion, Modern Industrial Technologies, Extended Mathematics, Extended Physics

### Compulsory

Reading, Writing, Math, Science, Sports, English, 3rd language





## For children exploring the world of Business

For children that advance in communication and love to be exploring the world without shyness, there are unlimited options into what their future will be like.

To grasp their potential and increase their knowledge about the Business world, Seiberg created a platform where business professionals bring their expertise and help children to develop critical thinking for creating or running a company.

Director of Faculty of Business and Diplomacy works with experts from Finance, Banking, Law and Real Estate to challenge children's minds into creating and launching a project or product of their own.

Children will enter the faculty at the age of 10 and finish at the age of 16. Children will meet friends from other faculties during general subjects like: Languages, Mathematics, Science and Sports.

After finishing the last year or Seiberg faculty of Business and Diplomacy, children can start preparing for the university of their choice. The choice is open to many fields with high chances for Universities majors such as:

Economics, Law, Banking, International relations, Political Science  
Diplomacy, International Business, Business Administration,  
Languages, Education, Sociology, Philosophy, Intelligence Analyst,  
Entrepreneurial Studies, Global Supply Chain Management, Marketing  
Management and Leadership, Health Care Management,  
Human Resource Management, Sales etc.

## FACULTY of BUSINESS & Diplomacy

**Grade 4 to 9**

**Age 10 - 15 years old**

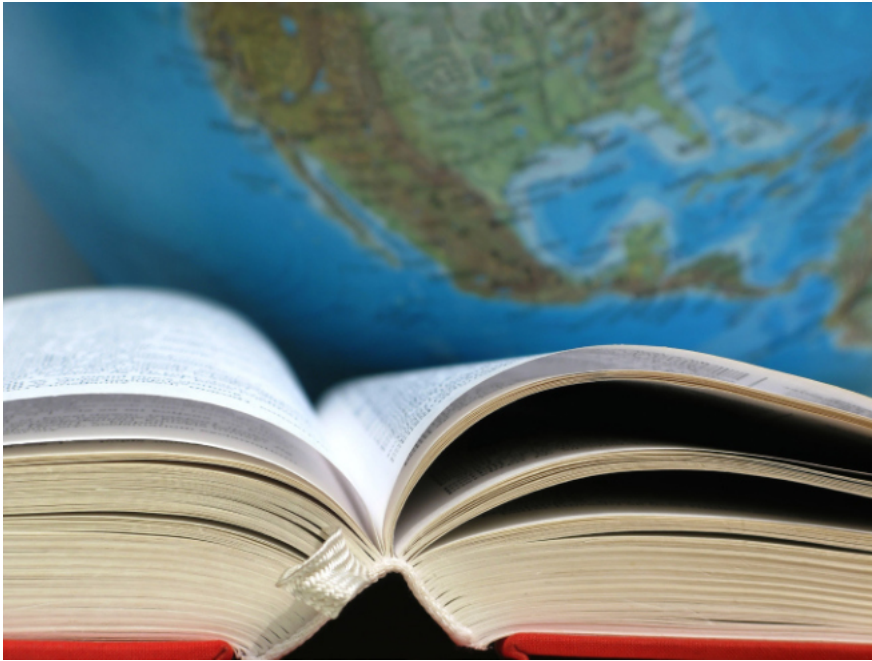
### Specialized studies

Finance&Banking, Real Estate, Diplomacy, Economy, Business, Government & Politics,  
International Law, Media communication, Calligraphy, International news

### Compulsory

Reading, Writing, Math, Science, Sports, English, 3rd language





### **3 LANGUAGES**

International Elementary School Seiberg provides education in 3 languages taught simultaneously.

Students will speak 3 languages on native level by the time they finish their elementary school.



## **TRILINGUAL EDUCATION**

BY THE AGE OF 10

SLOVAK LANGUAGE  
ENGLISH LANGUAGE  
GERMAN LANGUAGE

selective 3rd language:

SPANISH LANGUAGE  
CHINESE LANGUAGE  
RUSSIAN LANGUAGE  
KOREAN LANGUAGE

## **QUADRILINGUAL EDUCATION**

BY THE AGE OF 16

selective 4th language:

JAPANESE LANGUAGE  
ARABIC LANGUAGE  
FRENCH LANGUAGE  
ITALIAN LANGUAGE  
PORTUGUESE LANGUAGE  
LATIN LANGUAGE



## ONE QUESTION TO ASK WHEN ENTERING YOUR CHILD IN THE SCHOOL

Each day as we go to work , we drive children to school.  
We ask them if they have homework and if they have snack in the bag.

Children are looking out of the window thinking about their passion,  
which they must forget about, for the next few hours in the school.

### **But has anyone asked following question?**

1 000 0000 schools teach the same things.

“What is it that they are preparing our children for?”

Are students learning to be **a creator or a customer?**

Are they learning to be **an employee or employer?**

Are they learning to be a **listener or speaker?**

Except reading and writing, what is it that they be good at?  
What they will be passionate about?

Professions that did not exist 20 years ago, now rule the business world.  
For an average state school, it takes 20 years to incorporate the new subject  
into program.

20 YEARS !

No criticism.

It is just a Reality, that needs to be accepted and rewritten.

We work passionately at Seiberg to rewrite the time it takes.

**Miriam Itahashi**



SEIBERG is created to inspire our TEACHERS to see, that CHILD 's imagination and potential is greater than the rooms in which we stand, and in which they sit.

## FOR TEACHERS OF SEIBERG

# WHAT IS PEDAGOGY?

### Is it a form of freedom?

All learners and teachers are different. Seiberg discourages teachers to all use same educational materials. Rather than that teachers are free to decide how to engage their students in the content. Teachers do need to follow the school's curricula but only as a guide. The content, its specification and the timing when they introduce it to the students is decided according to the group's preferences, interests and academic level.

### Is it a place?

The learning spaces in Seiberg are designed thematically to fit the topics students are meant to learn during the time spent in this space. In addition to our wide range of sports facilities, our kindergarten and elementary school have specialized Art, Science, Mathematics, Music, Nature and Biology, Construction and Architecture, Geography and Social science classrooms. There, students can engage with authentic scientific tools and practices which build science inquiry skills and improve conceptual understanding. This approach also prevents students from spending too much time in only one isolated classroom. Instead the environment changes along with the content they are about to study and takes them in the beautiful space of education.

### Is it acceptance and obedience?

Seiberg concept leads students towards learning through argumentation. This involves arguing topics in ways similar to professional scientists and mathematicians. They can compare contrasting ideas and work together to establish or refute claims. They are encouraged to ask open-ended questions that don't have only one correct answer, construct solutions to problems and respond constructively to each other.

### Is it a view of reality?

Are we reading 6 books a year or one newspaper every day? The way of learning can be achieved one way or another. By giving the children the up-to-date information we encourage them in participating in important events and searching for new opportunities in their talents to be explored.

### Is it a travel?

Visiting a new country with the teacher to present its beauty, visit museums, galleries, exhibition halls, production sites, learning of new customs, traditions and fascinating facts increase student engagement and creates authentic learning experiences. In this way the knowledge gained in the internal learning spaces can be enriched by first-hand experiences, and vice-versa, our students have a chance to apply the knowledge they gain in the classroom. In this way students also collect evidence about what they have been thought about and are not just mere observers or memorizers of facts. Seiberg prepares our students for a lifetime of learning by making use of diverse learning events and opportunities.

### **Is it a subject that doesn't even exist?**

Today's subject : CONSOLIDATION

Last month's subject : MARS TRAVEL

Next month subject : CRYPTOCURRENCY

Seiberg pedagogical program involves stepping out of teaching standard subjects and instead consolidating the knowledge students are meant to receive from topics and projects. In this way students learn how to use their knowledge and skills in a meaningful and diverse ways and as a result the collaboration between students and their instructors is strengthened. This strategy allows for incidental learning which occurs when students carry out activities or discuss topics that are not overtly related to what is learned. Seiberg unites isolated learning fragments into more coherent and wider learning experiences.

### **Is it a meeting of someone new?**

Teachers from 12 different countries are daily part of our School. Professionals in the fields of Art, Technology, or Science are weekly visitors and leaders of the projects in different faculties. Experts invited to give external lectures and to discuss specific topics with our students are a necessity to understand how the world really works outside of the books. Seiberg allows students to gain first-hand information and have their knowledge widened by a professional in the field. It is essential for children come in contact with individuals who are passionate and devoted to their professions in order for them to pass the impulse, zeal and excitement of the profession to the next generation.

### **Is it a right way to compete?**

A wide range of sports activities carried out as integral part of the academic curriculum increase significantly the students' stamina, mental strength, concentration, willpower in addition to physical strength and fitness. Besides having a world class gymnasium, Seiberg campus offers further facilities for both indoor and outdoor sports including: swimming, gymnastics, fencing, team sports, ballet and martial arts.

### **Is it an ability to perform with feelings?**

It is the music, dance and art performance that imprints information in the brain and early training in the field of artistic performance significantly develops the areas in the brain connected to language and reasoning. It fully enhances the students' academic, social and emotional growth. Performing arts teaches discipline, perseverance and work ethic. Being able to forward any form of feeling plays an essential part in development of social skills and emotional awareness in students. Learning music also leads to increased coordination, better memorization, to a strive for improvement. Through performing arts students will increase their skills in pattern recognition, spatial intelligence, creative thinking, better auditory skills and raised imagination and intellectual curiosity.



# PARTS OF THE SCHOOL

## Elementary school Level 1

### DEFINITIONS OF CREATIVITY

Classrooms: **English & German & Spanish**  
**English & German & Chinese**  
**English & German** (selective Slovak, Spanish, Korean, Chinese, Russian)  
**English & German** (selective Slovak, Spanish, Korean, Chinese, Russian)

Number of children attending : 168  
Number of school personnel : 36  
Student / Teacher ratio : 7,0  
Student / Personnel ratio : 4,7

---

## Elementary school Level 2

### FACULTY BASICS

Number of children attending : 168  
Number of school personnel : 36  
Student / Teacher ratio : 7,0  
Student / Personnel ratio : 4,7

Classrooms: **Faculty of Cybernetics & Modern Technologies**  
**Faculty of Business & Diplomacy**  
**Faculty of Science & Medicine**  
**Faculty of Design & Engineering**

**Faculties are full time in 4 Languages**  
**Language Options:** English, Spanish, Chinese, German, Russian, Korean, Slovak  
**Additional private lessons available:** Japanese, Arabic, Latin, Italian , French

## Elementary school Level 3

### DEFINITIONS OF PRESENTATION

Number of children attending : 168  
Number of school personnel : 36  
Student / Teacher ratio : 7,0  
Student / Personnel ratio : 4,7

Classrooms: **Faculty of Cybernetics & Modern Technologies**  
**Faculty of Business & Diplomacy**  
**Faculty of Science & Medicine**  
**Faculty of Design & Engineering**

**Faculties are full time in 4 Languages**  
**Language Options:** English, Spanish, Chinese, German, Russian, Korean, Slovak  
**Additional private lessons available:** Japanese, Arabic, Latin, Italian , French





Soft play



Art room



Reading room



Climb to cafeteria





## WE DON'T NEED NO EDUCATION! INSPIRE US!

We create architecture that will appeal to the visual child, who can fully appreciate the environments, while also inspiring kinesthetic, logical, and interpersonal students with the tools and space needed for facilitating inquiry-based and cooperative-based learning.

For the linguistic child, every class is stimulated through lecture as well as through multiple languages. For the musical child, rooms such as the gymnasium and musical instrument room attends to their learning style. As well, most children are not strictly one intelligence.

There is overlap not only within the individual mind, but also within the different intelligences. Thus, after assessing students, activities are rotated and integrated to tend to all intelligences, beginning in kindergarten. In this way, students become accustomed to a variety of learning techniques at a young age. This allows them to choose for themselves which studying technique best suits them for the future, while allowing them to fully appreciate and grow from the learning experience.



# ELEMENTARY

## Level 1

### DEFINITIONS OF CREATIVITY

**Classrooms:** English & German & Spanish  
 English & German & Chinese  
 English & German  
 English & German

|   |            |
|---|------------|
| <b>Total Capacity Elementary Level 1</b>      | <b>168</b> |
| Total Capacity / Number of children 1st grade | 56         |
| Total Capacity / Number of children 2nd grade | 56         |
| Total Capacity / Number of children 3rd grade | 56         |
| Number of children in 1 group                 | 14         |

Accepting children from 6 years old to 9 years old

## ELEMENTARY 1 SIZE

Number of children attending : 168  
Number of school personnel : 36  
Student / Teacher ratio : 7,0  
Student / Personnel ratio : 4,7

### CHOOSE YOUR CLASSROOM

#### A.

##### **English & German & Spanish Classroom**

Number of students accepted in one year : 14

Nationality of teachers:

English Native teachers, German Native teachers, Spanish Native teachers

Degree of teachers:

University degree in Elementary or Hight School Education major.

#### B.

##### **English & German & Chinese Classroom**

Number of students accepted in one year : 14

Nationality of teachers:

English Native teachers, German Native teachers, Chinese Native teachers

Degree of teachers:

University degree in Elementary or Hight School Education major.

#### C.

##### **English & German Classroom** (selective Slovak, Spanish, Korean, Chinese, Russian)

Number of students accepted in one year : 14

Nationality of teachers:

English, German, Slovak, Spanish, Chinese, Korean and Russian Native teachers

Degree of teachers:

University degree in Elementary or Hight School Education major.

#### D.

##### **English & German Classroom** (selective Slovak, Spanish, Korean, Chinese, Russian)

Number of students accepted in one year : 14

Nationality of teachers:

English, German, Slovak, Spanish, Chinese, Korean and Russian Native teachers

Degree of teachers:

University degree in Elementary or Hight School Education major.

### Teacher's lounge



## ELEMENTARY 1 STAFF

|  |           |
|--|-----------|
| <b>State curriculum Teachers</b>         |           |
| Number of Instructors                    | 4         |
| Number of German teachers                | 4         |
| <b>Native language Teachers</b>          |           |
| Number of Spanish Teachers               | 2         |
| Number of Chinese Teachers               | 2         |
| Number of English Teachers               | 2         |
| Number of Russian Teachers               | 1         |
| Number of Korean Teachers                | 1         |
| <b>Faculty Teachers</b>                  |           |
| Specilized faculty teachers              | 4         |
| <b>Sports Teachers</b>                   |           |
| Number of foreign sport teachers         | 4         |
| <b>Office &amp; Other Staff</b>          |           |
| Director of 1-3 grade elementary school  | 1         |
| Accountant                               | 1         |
| Receptionist - Customer service & Events | 2         |
| HR & Immigration                         | 1         |
| Cleaning lady & Technician               | 4         |
| Chef for Breakfast, Snacks & Deserts     | 3         |
|  | <b>36</b> |

## ELEMENTARY ROOMS

| STUDY ROOMS - ELEMENTARY 1  |  | m <sup>2</sup>           | Designed for given number of children |
|-----------------------------|--|--------------------------|---------------------------------------|
| State curriculum classrooms | Literature & Languages / Mathematics & Physics | 50                       | 14                                    |
|                             | Literature & Languages / Mathematics & Physics | 50                       | 14                                    |
|                             | Literature & Languages / Mathematics & Physics | 50                       | 14                                    |
|                             | Literature & Languages / Mathematics & Physics | 50                       | 14                                    |
| Art / Science classrooms    | ART / Nature / Architecture & Design           | 70                       | 14                                    |
|                             | ART / Geography & History & Travell            | 50                       | 14                                    |
|                             | ART / Nature / Sculpture & Craftsmanship       | 50                       | 14                                    |
|                             | ART / Biology & Chemistry                      | 70                       | 14                                    |
| Faculty classrooms          | Computers & Programming classroom              | 50                       | 14                                    |
|                             | 3D Car construction classroom                  | 70                       | 14                                    |
|                             | Finance & Politics classroom                   | 50                       | 14                                    |
|                             | Communication classroom & Tea room             | 50                       | 14                                    |
| <b>Total area</b>           |  | <b>660 m<sup>2</sup></b> |                                       |



Nature study classroom

Art room



Art presentation room



**SPORTS FACILITIES - ELEMENTARY 1**

m<sup>2</sup>

Designed for given  
number of people

**VOLLEYBALL GYMNASIUM SMALL 18x12**

Gymnasium tool storage  
changing room for children , showers and toilets

216

20

50

28

28

28

**Total area**

**286 m<sup>2</sup>**



**BALLET & YOGA GYMNASIUM 18 x 6**

Gymnasium tool storage  
changing room for children , showers and toilets

108

20

50

14

14

14

**Total area**

**178 m<sup>2</sup>**



**GYMNASTICS HALL SMALL 18 x 12 /**

located in one facility with Gymnastics hall big  
- total size of 18 x 36

216 28

Gymnasium tool storage

20 28

changing room for children , showers and toilets

50 28

**Total area**

**286 m<sup>2</sup>**

| ROTATION FOR GYMNASICS HALL SMALL 18 x 12 |                 |              |     |      |     |
|---|-----------------|--------------|-----|------|-----|
|   | Mon             | Tue          | Wed | Thur | Fri |
| 8:00 - 9:30                               | 1AB             | 3AB          | 1A  | 2A   | 3A  |
| 9:30-11:15                                | 1CD             | 3CD          | 1B  | 2B   | 3B  |
| 11:15 - 12:45 lunch                       |                 |              |     |      |     |
| 13:00 - 14:30                             | 2AB             | kindergarten | 1C  | 2C   | 3C  |
| 14:45 - 16:15                             | 2CD             | kindergarten | 1D  | 2D   | 3D  |
| 16:15 - 18:00                             | Volleyball Club |              |     |      |     |

| ROTATION FOR GYMNASICS HALL SMALL 18 x 12 |   |          |          |      |     |
|---|---|----------|----------|------|-----|
|   | Mon   | Tue      | Wed      | Thur | Fri |
| 8:00 - 9:30                               | 3A  | 8AB hall | 6AB hall | 1A   | 2A  |
| 9:30-11:15                                | 3B  | 8CD hall | 6CDhall  | 1B   | 2B  |
| 11:15 - 12:45 lunch                       |   |          |          |      |     |
| 13:00 - 14:30                             | 3C  | 9AB hall | 7ABhall  | 1C   | 2C  |
| 14:45 - 16:15                             | 3D  | 9CD hall | 7CDhall  | 1D   | 2D  |
| 16:15 - 18:00                             | Gymnastics Club   |          |          |      |     |
| 18:00-21:00                               | Public use with Accomodation cards or Business membership cards Seiberg |          |          |      |     |

| ROTATION FOR BALET & YOGA GYMNASIUM 18 x 6 |               |     |     |      |     |
|--|---------------|-----|-----|------|-----|
|  | Mon           | Tue | Wed | Thur | Fri |
| 8:00 - 9:30                                | kindergarten  | 4A  | 2A  | 3A   | 1A  |
| 9:30-11:15                                 | kindergarten  | 4B  | 2B  | 3B   | 1B  |
| 11:15 - 12:45 lunch                        |               |     |     |      |     |
| 13:00 - 14:30                              | kindergarten  | 4C  | 2C  | 3C   | 1C  |
| 14:45 - 16:15                              | kindergarten  | 4D  | 2D  | 3D   | 1D  |
| 16:15 - 19:00                              | Ballet school |     |     |      |     |



**STORAGE ROOMS & Lockers**  
**ELEMENTARY 1** m<sup>2</sup> Designed for given number of people

|  |    |          |
|--|----|----------|
| Lockers and Changing space for children on arrival / possibly to use also hallway area   | 50 | 168      |
| Space for cleaning dirty shoes & storage space for drying winter jackets when coming from outdoors or from playground / hidden - not visible to school visitors. | 20 | 100 -120 |
| Storage space for Education documents, teachers' books, & prints   | 20 |          |
| Storage space for seasonal furniture and seasonal decoration   | 70 |          |
| External & Part time employee changing room and Employee safety lockers  | 30 | 43       |
| Cleaning lady room 1 / including storage for tools and hygienic items  | 12 | 1        |
| Cleaning lady room 2 / including storage for tools and hygienic items  | 12 | 1        |
| Archive / Next to HR room  | 20 |          |
| Printing room  | 12 |          |

**Total area** 246 m<sup>2</sup>

**RECEPTION & OFFICES -**  
**ELEMENTARY 1** m<sup>2</sup> Designed for given number of people

|  |    |          |
|--|----|----------|
| Reception / Waiting room for parents, and open Office space for computers for 3 employees / Design : in the style of hotel reception | 50 | 8        |
| Directors office / including meeting room Location / Near Reception  | 54 | up to 12 |
| HR office / Immigration Director & accountant office / Near Director Room  | 18 | 4        |
| Meeting room for teachers and parents, staff meetings, welcoming guests / Next to Director's room                                    | 60 | 30       |

**Total area** 182 m<sup>2</sup>



**WASH ROOMS & HYGIENE SPACES  
ELEMENTARY 1**      m<sup>2</sup>      Designed for given  
number of people

|   |    |   |
|---|----|---|
| RECEPTION wash room / for 2 children and 2 adults | 15 | 4 |
| GIRLS wash rooms area A / 4 Toilets & basins      | 15 | 4 |
| GIRLS wash rooms area B / 4 Toilets & basins      | 15 | 4 |
| GIRLS wash rooms area C / 4 Toilets & basins      | 15 | 4 |
| BOYS wash rooms area A / 4 Toilets & basins       | 15 | 4 |
| BOYS wash rooms area B / 4 Toilets & basins       | 15 | 4 |
| BOYS wash rooms area C / 4 Toilets & basins       | 15 | 4 |
| Employee Wash room / Male Toilets 3 pieces        | 15 | 3 |
| Employee Wash room / Female Toilets 3 pieces      | 15 | 3 |
| Director and guest toilets / 2 pieces             | 9  | 2 |

**Total area**      144 m<sup>2</sup>



**TEACHER' s OFFICEs - ELEMENTARY 1**      m<sup>2</sup>      Designed for given  
number of people

|   |    |   |
|---|----|---|
| Teachers office Literature & Languages / Mathematics & Physics / 2 teachers / Located in between 2 classrooms / hidden closet space | 21 | 2 |
| Teachers office Literature & Languages / Mathematics & Physics / 2 teachers / Located in between 2 classrooms/ hidden closet space  | 21 | 2 |
| Teachers office Geography & History / Nature plants animals / 2 teachers / Located in between 2 classrooms/ hidden closet space     | 21 | 2 |
| Teachers office Chemistry & Science / Finance / 2 teachers / Located in between 2 classrooms  | 21 | 2 |
| Teachers office Sports Teacher office / Cooking Teacher office 2 teachers / Located in between 2 areas / hidden closet space        | 21 | 2 |
| Teachers office - Sports Teachers / Located by the Sports Facility area   | 21 | 2 |
| Teachers office ART / 2 teachers / Located in between 2 classrooms / hidden closet space  | 21 | 2 |
| Teachers office Computers & Robotics / Located in between 2 classrooms / hidden closet space  | 21 | 2 |

**Total area**      168 m<sup>2</sup>

**Hallways & Technical spaces**      650 m<sup>2</sup>

**Elementary 1 Building Area**      2 800 m<sup>2</sup>

**Out of which Sports Facility Area**      750 m<sup>2</sup>

**Today 's test from science**

Make the best smelling soap right here, right now...  
in the Seiberg classroom



Elementary cafeteria



SHARED SPACES  
**ELEMENTARY**  
**1 & 2**

## Seiberg International Elementary 1 & 2



### KITCHEN & CAFETERIA

Number of seats  
for children

Number of seats  
for adults

Kitchen serving 336 children & 92 adults  
Kitchen storage  
Cafeteria for Elementary 1 & 2  
Cafeteria for Teachers & Visitors  
Food Lounges - 4 pieces

2 x a day 168

2 x a day 46  
17

**Total area**

**448 m<sup>2</sup>**

### SCHOOL LIBRARY & THEATER

m<sup>2</sup> Designed for given  
number of people

|   |     |    |
|---|-----|----|
| School Library  | 200 | 56 |
| Tea room / Tatami Japanese style room / used for elementary school guests welcome drink               | 24  | 6  |
| Theater room / See Conference spaces<br>Gallery of students work / part of reception and waiting area | 32  | 12 |

**Total area**

**256 m<sup>2</sup>**



**Hallways & Technical spaces**

**211 m<sup>2</sup>**

**Shared Spaces E1&2 Building Area**

**915 m<sup>2</sup>**

**Out of which Sports Facility Area**

**0 m<sup>2</sup>**



## CHOOSE YOUR PASSION AT LITTLE AGE, OR YOU WILL HAVE PASSION NEVER

After building and strengthening our students' confidence in their overall learning experience, children have the ability to choose the field of study their minds gravitate towards.

The faculties of Cybernetics, Business, Science, and Design offered after third grade allow students a variety of paths to follow and flourish in depending on their own personal passions.

Just as every child has their own learning pace and style, they also have a personalized curiosity for certain fields of study.

In Seiberg, children can step into the field and explore what it has to offer, while still maintaining the core classes of Reading, Writing, Math, Science and Language necessary for a well-rounded experience.

As a result, they prepare themselves not only for future education but also for their future careers and world engagement. So that, when they leave Seiberg, the world they've cultivated inside themselves and the world waiting outside are equals.



Biology study



# ELEMENTARY

## Level 2

### FACULTY BASICS

**Classrooms:** Faculty of Cybernetics & Modern Technologies  
Faculty of Business & Diplomacy  
Faculty of Science & Medicine  
Faculty of Design & Engineering

**Total Capacity Elementary Level 2** **168**

Total Capacity / Number of children 4th grade 56

Total Capacity / Number of children 5th grade 56

Total Capacity / Number of children 6th grade 56

Number of children in 1 group 14

**Language Options:** English, Spanish, Chinese, German, Russian, Korean

**Additional private lessons available:** Japanese, Arabic, Latin, Italian, French

Accepting children from 10 years old to 12 years old

## ELEMENTARY 2 SIZE

Number of children attending : 168  
Number of school personnel : 36  
Student / Teacher ratio : 7,0  
Student / Personnel ratio : 4,7

### CHOOSE YOUR CLASSROOM

**A.**

**Faculty of Cybernetics & Modern Technologies:**

Number of students accepted in one year: 14

**B.**

**Faculty of Business & Diplomacy**

Number of students accepted in one year: 14

**C.**

**Faculty of Science & Medicine**

Number of students accepted in one year: 14

**D.**

**Faculty of Design & Engineering**

Number of students accepted in one year : 14

**Nationality of teachers:**

English, German, Slovak, Spanish, Chinese, Korean and Russian Native teachers

**Private lessons teachers:**

Japanese, Arabic, Latin, Italian , French

**Degree of teachers:**

University degree in Elementary or High School Education major.

Medical classroom





## ELEMENTARY 2 STAFF

|  |           |
|--|-----------|
| <b>State curriculum Teachers</b>         |           |
| Number of Instructors                    | 4         |
| Number of German teachers                | 4         |
| <b>Native language Teachers</b>          |           |
| Number of Spanish Teachers               | 2         |
| Number of Chinese Teachers               | 2         |
| Number of English Teachers               | 2         |
| Number of Russian Teachers               | 1         |
| Number of Korean Teachers                | 1         |
| <b>Faculty Teachers</b>                  |           |
| Specilized faculty teachers              | 4         |
| <b>Sports Teachers</b>                   |           |
| Number of foreign sport teachers         | 4         |
| <b>Office &amp; Other Staff</b>          |           |
| Director of 1-3 grade elementary school  | 1         |
| Accountant                               | 1         |
| Receptionist - Customer service & Events | 2         |
| HR & Immigration                         | 1         |
| Cleaning lady & Technician               | 4         |
| Chef for Breakfast, Snacks & Deserts     | 3         |
|  | <b>36</b> |

## ELEMENTARY ROOMS

| STUDY ROOMS - ELEMENTARY 2  |   | m <sup>2</sup>           | Designed for given number of children |
|-----------------------------|---|--------------------------|---------------------------------------|
| State curriculum classrooms | Literature & Languages / Mathematics & Biology                            | 50                       | 14                                    |
|                             | Literature & Languages / Mathematics & Physics                            | 50                       | 14                                    |
|                             | Literature & Languages / Mathematics & History Geography                  | 50                       | 14                                    |
|                             | Literature & Languages / Mathematics & Chemistry                          | 50                       | 14                                    |
| Subjects in languages       | Reading & Writing / Drawing & Painting                                    | 50                       | 14                                    |
|                             | Reading & Writing / Human science & Business (Companies around the world) | 50                       | 14                                    |
|                             | Reading & Writing / Geography / History / Travell                         | 50                       | 14                                    |
|                             | Reading & Writing / Communication room                                    | 50                       | 14                                    |
| Faculty classrooms          | Cybernetics classroom   | 90                       | 14                                    |
|                             | Business classroom  | 90                       | 14                                    |
|                             | Science classroom   | 90                       | 14                                    |
|                             | Design classroom  | 90                       | 14                                    |
| <b>Total area</b>           |   | <b>760 m<sup>2</sup></b> |                                       |



Car design atelier

SPORTS FACILITIES - ELEMENTARY 2

m<sup>2</sup> Designed for given  
number of people

|   |     |    |
|---|-----|----|
| <b>VOLEYBALL GYMNASIUM BIG 18x24</b>            | 432 | 28 |
| Gymnasium tool storage                          | 20  | 28 |
| Changing room for children, showers and toilets | 50  | 28 |

**Total area** 502 m<sup>2</sup>

ROTATION FOR **VOLEYBALL GYMNASIUM BIG 18 x 24**

|                     | Mon  | Tue | Wed | Thur | Fri |
|---------------------|--|-----|-----|------|-----|
| 8:00 - 9:30         | 4A   | 5A  | 6A  | 4AB  | 6AB |
| 9:30 - 11:15        | 4B   | 5B  | 6B  | 4CD  | 6CD |
| 11:15 - 12:45 lunch |  |     |     |      |     |
| 13:00 - 14:30       | 4C   | 5C  | 6C  | 5AB  |     |
| 14:45 - 16:15       | 4D   | 5D  | 6D  | 3CD  |     |
| 16:15 - 18:00       | Volleyball Club  |     |     |      |     |
| 18:00 - 21:00       | Public use with Accomodation cards or Business membership cards Seiberg /<br>team reservation needed |     |     |      |     |

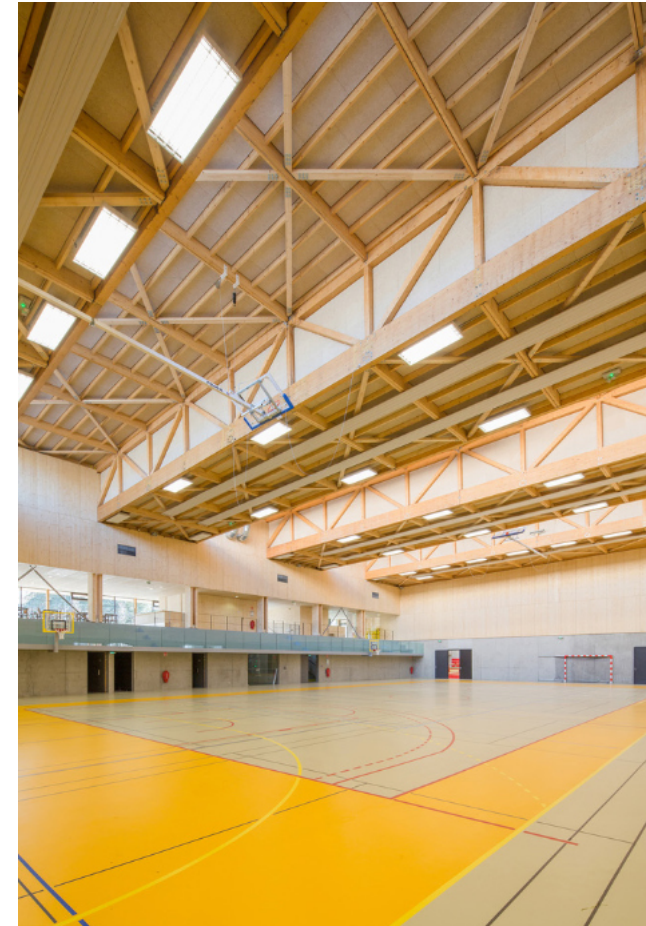
WASH ROOMS & HYGIENE SPACES  
ELEMENTARY 2

m<sup>2</sup> Designed for given  
number of people

|   |    |   |
|---|----|---|
| RECEPTION wash room / for 2 children and 2 adults | 15 | 4 |
| GIRLS wash rooms area A / 4 Toilets & basins      | 15 | 4 |
| GIRLS wash rooms area B / 4 Toilets & basins      | 15 | 4 |
| GIRLS wash rooms area C / 4 Toilets & basins      | 15 | 4 |
| BOYS wash rooms area A / 4 Toilets & basins       | 15 | 4 |
| BOYS wash rooms area B / 4 Toilets & basins       | 15 | 4 |
| BOYS wash rooms area C / 4 Toilets & basins       | 15 | 4 |
| Employe Wash room / Male Toilets 3 pieces         | 15 | 3 |
| Employe Wash room / Female Toilets 3 pieces       | 15 | 3 |
| Director and guest toilets / 2 pieces             | 9  | 2 |

**Total area** 144 m<sup>2</sup>

Volleyball gym



**RECEPTION & OFFICES -  
ELEMENTARY 2**

 m<sup>2</sup> Designed for given  
number of people

|  |    |          |
|--|----|----------|
| Reception / Waiting room for parents, and open Office space for computers for 3 employees / Design : in the style of hotel reception | 50 | 8        |
| Directors office / including meeting room Location / Near Reception  | 54 | up to 12 |
| HR office / Immigration Director & accountant office / Near Director Room  | 18 | 4        |
| Meeting room for teachers and parents, staff meetings, welcoming guests / Next to Director's room                                    | 60 | 30       |

**Total area 182 m<sup>2</sup>**
**STORAGE ROOMS & Lockers  
ELEMENTARY 2**

 m<sup>2</sup> Designed for given  
number of people

|  |    |           |
|--|----|-----------|
| Lockers and Changing space for children on arrival / possibly to use also hallway area   | 50 | 168       |
| Space for cleaning dirty shoes & storage space for drying winter jackets when coming from outdoors or from playground / hidden - not visible to school visitors. | 25 | 100 - 120 |
| Storage space for Education documents, teachers books, & printables  | 20 |           |
| Storage space for season furniture and season decoration   | 70 |           |
| External & Part time employee changing room and Employee safety lockers  | 30 | 43        |
| Cleaning lady room 1 / including storage for tools and hygienic items  | 12 | 1         |
| Cleaning lady room 2 / including storage for tools and hygienic items  | 12 | 1         |
| Archive / Next to HR room  | 20 |           |
| Printing room  | 12 |           |

**Total area 251 m<sup>2</sup>**
**TEACHER'S OFFICES - ELEMENTARY 2**

 m<sup>2</sup> Designed for given  
number of people

|   |    |   |
|---|----|---|
| Teachers office Literature & Languages / Mathematics & Physics / 2 teachers / Located in between 2 classrooms / hidden closet space | 21 | 2 |
| Teachers office Literature & Languages / Mathematics & Physics / 2 teachers / Located in between 2 classrooms/ hidden closet space  | 21 | 2 |
| Teachers office Geography & History / Nature plants animals / 2 teachers / Located in between 2 classrooms/ hidden closet space     | 21 | 2 |
| Teachers office Chemistry & Science / Finance / 2 teachers / Located in between 2 classrooms  | 21 | 2 |
| Teachers office Sports Teacher office / Cooking Teacher office 2 teachers / Located in between 2 areas / hidden closet space        | 21 | 2 |
| Teachers office - Sports Teachers / Located by the Sports Facility area   | 21 | 2 |
| Teachers office ART / 2 teachers / Located in between 2 classrooms / hidden closet space  | 21 | 2 |
| Teachers office Computers & Robotics / Located in between 2 classrooms / hidden closet space  | 21 | 2 |

**Total area 168 m<sup>2</sup>**
**Hallways & Technical spaces 513 m<sup>2</sup>**
**Elementary 2 Building Area 2 530 m<sup>2</sup>**
**Out of which Sports Facility Area 502 m<sup>2</sup>**



## NO BIRTH CERTIFICATES! CHILD WILL GO TO CLASSROOM OF HIS / HER BRAIN'S AGE LEVEL

Seiberg utilizes learning that promotes student-based teaching.

Student-based teaching realizes teachers are facilitators of a group, and not the sole authority. They are there to guide and assess the learning process, while always keeping in mind that every student is unique in learning pace and style.

The learning pace of every child is versatile and, at times, we could also say complicated. Sometimes, a child is above grade-level in all subjects. The next child can be advanced in one subject and be exactly on grade level in another. The worry with both children is that skipping a grade might cause social and personal anxiety.

At its heart, Seiberg supports every child to have the confidence to learn at their own pace in their own way without stigma. In order to eradicate this stigma, children are assessed and grouped based on comprehension rather than age. This way, children learn at their own pace and are not overshadowed by children who are at a different level.

Your child can be of level 2 in Languages but level 4 in Mathematics and vice versa. The school age mixing becomes normal for children to socialize with other age groups, to accept that age is not equivalent to maturity or intelligence.



SHARED SPACES

**ELEMENTARY**

**2 & 3**

# Aquaponics

**Fruits & Vegetables growing greenhouse & education areas**



## **Aquaponics and Education**

Aquaponics is a wonderful opportunity to teach children core subjects of Seiberg like Mathematics, Biology, Chemistry and Engineering in the real life environment. Students can study fish, plants and bacteria interacting in a living ecosystem.

Due to very good conditions for the plant growth created by Aquaponic system, children will learn how to perform water quality tests and measure growth rates in fish and plants.

To teach aquaponics means to teach in a classroom that is converted into living greenhouse and science lab at once.

## **Aquaponics and fascinating tastes**

Aquaponics of Seiberg will serve to Residents and Students that wish to grow and eat the highest quality of the fruits & vegetables.

School Cafeterias or Belvedere restaurants will have access to Aquaponics products that will be grown in own Seiberg Aquaponics green house.

**SPORTS FACILITIES - ELEMENTARY 2&3** m<sup>2</sup> Designed for given number of people

|   |     |    |
|---|-----|----|
| <b>FENCING GYMNASIUM 18 x 12</b>                | 216 | 14 |
| Gymnasium tool storage                          | 20  | 14 |
| Changing room for children, showers and toilets | 50  | 14 |

**Total area** 286 m<sup>2</sup>

ROTATION FOR **FENCING GYMNASIUM 18 x 12** /4 fencing lines of size 18 x 2

|                     | Mon  | Tue | Wed | Thur | Fri |
|---------------------|--|-----|-----|------|-----|
| 8:00 - 9:30         | 6A   | 7A  | 4A  | 8A   | 5A  |
| 9:30-11:15          | 6B   | 7B  | 4B  | 8B   | 5B  |
| 11:15 - 12:45 lunch |  |     |     |      |     |
| 13:00 - 14:30       | 6C   | 7C  | 4C  | 8C   | 5C  |
| 14:45 - 16:15       | 6D   | 7D  | 4D  | 8D   | 5D  |
| 16:15 - 18:00       | Fencing Club                               |     |     |      |     |
| 18:00-21:00         | Public use with Accomodation cards Seiberg |     |     |      |     |



ROTATION FOR **SWIMMING POOL**

| 6:00 - 8:00         | Public use with Business membership cards Seiberg   |                              |          |      |                              |
|---------------------|---|------------------------------|----------|------|------------------------------|
|                     | Mon   | Tue                          | Wed      | Thur | Fri                          |
| 8:00 - 9:30         | 9AB/half  | Elementary 1 Swimming school | 9AB/half | 7A   | Elementary 2 Swimming school |
| 9:30-11:15          |   |                              | 9CD/half | 7B   |                              |
| 11:15 - 12:45 lunch |   |                              |          |      |                              |
| 13:00 - 14:30       | Elementary 1 Swimming school  | Elementary 2 Swimming school | 8AB/half | 7C   | 8AB/half                     |
| 14:45 - 16:15       |   |                              | 8AB/half | 7D   | 8AB/half                     |
| 16:15 - 18:00       | Swimming Club   |                              |          |      |                              |
| 18:00-21:00         | Public use with Accomodation cards or Business membership cards Seiberg / line reservation needed |                              |          |      |                              |

**SWIMMING POOL**

|   |     |    |
|---|-----|----|
| Children's swimming pool / Located in the Sports Area near by the Swimming pool | 400 | 8  |
| Swimming staff office room  | 25  | 3  |
| Changing room for children, showers and toilets , hair dryers A                 | 25  | 14 |
| Changing room for children, showers and toilets , hair dryers B                 | 25  |    |
| Women / Staff & Trainers changing room / showers toilets, hair dryers           | 14  | 14 |
| Floor area by the Swimming pool   | 328 | 3  |
| Men / Staff & Trainers changing room / showers toilets, hair dryers             | 14  | 14 |
| Storage   | 25  | 3  |

**Total area** 856 m<sup>2</sup>

|  |     |    |
|--|-----|----|
| <b>FITNESS 12 x 18</b>                           | 216 | 28 |
| Gymnasium tool storage                           | 20  | 28 |
| Changing room for children , showers and toilets | 90  | 28 |

**Total area** 326 m<sup>2</sup>

| ROTATION FOR FITNESS GYM |   |     |     |      |     |
|--------------------------|---|-----|-----|------|-----|
|                          | Mon   | Tue | Wed | Thur | Fri |
| 6:00 - 8:00              | Free use with Seiberg Employee Card, Seiberg Accomodation card or Seiberg Business membership card. |     |     |      |     |
| 8:00 - 9:30              |   |     |     |      | 9A  |
| 9:30 - 11:15             |   |     |     |      | 9B  |
| 11:15 - 12:45 lunch      |   |     |     |      |     |
| 13:00 - 14:30            |   |     |     |      | 9C  |
| 14:45 - 16:15            |   |     |     |      | 9D  |
| 16:15 - 22:00            |   |     |     |      |     |

|   |     |    |
|---|-----|----|
| <b>GYMNASTICS HALL BIG 18 x 24 / located in one facility with Gymnastics hall small - total size of 18 x 36</b> | 432 | 28 |
| Gymnasium tool storage  | 20  | 28 |
| Changing room for children , showers and toilets  | 50  | 28 |

**Total area** 502 m<sup>2</sup>

| ROTATION FOR GYMNASIUM BIG 18 x 24 |   |          |          |              |     |
|------------------------------------|---|----------|----------|--------------|-----|
|                                    | Mon   | Tue      | Wed      | Thur         | Fri |
| 8:00 - 9:30                        | 5A  | 8AB hall | 6AB hall | kindergarten | 4A  |
| 9:30 - 11:15                       | 5B  | 8CD hall | 6CDhall  | kindergarten | 4B  |
| 11:15 - 12:45 lunch                |   |          |          |              |     |
| 13:00 - 14:30                      | 5C  | 9AB hall | 7ABhall  | 7AB          | 4C  |
| 14:45 - 16:15                      | 5D  | 9CD hall | 7CDhall  | 7CD          | 4D  |
| 16:15 - 18:00                      | Gymnastics Club   |          |          |              |     |
| 18:00-21:00                        | Public use with Accomodation cards or Business membership cards Seiberg |          |          |              |     |





**SHARED CLASSROOMS  
- FOR SECOND & THIRD LEVEL**

|  | m <sup>2</sup>           | Designed for given number of people |
|--|--------------------------|-------------------------------------|
| Faculty of Design & Engineering - study center | 120                      | 14                                  |
| Faculty of Business & Diplomacy - study center | 120                      | 14                                  |
| Faculty of Science and Medicine - study center | 120                      | 14                                  |
| Faculty of Cybernetics - study center          | 120                      | 14                                  |
| Library & Media center                         | 120                      | 14                                  |
| <b>Total area</b>                              | <b>600 m<sup>2</sup></b> |                                     |



**MASTERCHEF KITCHEN  
COOKING CLASSROOM BIG**

|  | m <sup>2</sup>           | Designed for given number of people |
|--|--------------------------|-------------------------------------|
| Cooking Classroom small / located near cafeteria                                       | 180                      | 32                                  |
| Cooking Classroom tools storage  | 40                       | 32                                  |
| Cooking Classroom food storage   | 40                       | 32                                  |
| Cooking classroom refrigerators  | 15                       | 32                                  |
| Serving room /separate Dining near cafeteria which can be part of cafeteria or locked. | 60                       | 32                                  |
| <b>Total area</b>  | <b>335 m<sup>2</sup></b> |                                     |

Masterchef kitchen



**Hallways & Technical spaces**

**870 m<sup>2</sup>**

**Shared Spaces E2&E3  
Building Area**

**3 775 m<sup>2</sup>**

**Out of which Sports Facility Area**

**1 970 m<sup>2</sup>**



## SCHOOL 'S SPACE is now CHILDREN'S OWN ATELIER

In the elementary and secondary level schools, classrooms fit the mood and movement of their subjects.

The Faculty of Business and Diplomacy offers discussion-based room design to encourage thought-provoking conversation and social engagement between students and teachers, as well as lecturers.

Meanwhile other faculties, like the Faculty of Design and Engineering offer more free-flowing, open layouts for students and creative projects to move without restraints.

This is not only for the sake of efficiency, but also for student and teacher engagement. In general, schools tend to place the responsibility of engagement fully on the student and teacher, leaving the design of the classroom as a generic four-walled space with desks and chairs.

This implies that anything or nothing could happen in that room, with no particular importance or vibrance. However, when given a room built with passion and with specific purpose it gives the sensation of purpose and passion to those working there. In subjects otherwise considered difficult or boring, students will find enjoyment and show curiosity when given this stimulating environment.



## NO CLASSROOM LIKE ANOTHER

At Seiberg's foundation is a conscious architectural design. While most schools around the globe offer a universal classroom design, our campus acknowledges two things classrooms and students need: diversity and sensation. There is a balance of low-tech and high-tech engagement depending on the room and faculty of study, allowing students to enter the globalized forum of education through technology while also giving time and space in other, low-tech, rooms for interpersonal relationships, conversation and hands-on learning. More importantly, each room and faculty of study is catered towards the subject taught there.

In the kindergarten, rooms engage with the students through subject-specific design, toys and games. For example:

- Communication & Reading room: the design of astronomy and space allows students to step outside of this world and think about big-picture concepts. Provided are science games, but the focus is on reading, writing and communicating.
- Architecture and Travel room: draws students in with a large world map and examples of architecture to bring them back into the world and visualize it as they learn. Provided are geography games, blocks and other construction play, strategy games such as chess.

Architecture atelier



# ELEMENTARY Level 3

## DEFINITIONS OF PRESENTATION

**Classrooms:** Faculty of Cybernetics & Modern Technologies  
Faculty of Business & Diplomacy  
Faculty of Science & Medicine  
Faculty of Design & Engineering

**Total Capacity Elementary Level 3** **168**

Total Capacity / Number of children 4th grade 56

Total Capacity / Number of children 5th grade 56

Total Capacity / Number of children 6th grade 56

Number of children in 1 group 14

**Language Options:** English, Spanish, Chinese, German, Russian, Korean

**Additional private lessons available:** Japanese, Arabic, Latin, Italian, French

Accepting children from 13 years old to 15 years old

## ELEMENTARY 3 SIZE

Number of children attending : 168  
Number of school personnel : 36  
Student / Teacher ratio : 7,0  
Student / Personnel ratio : 4,7

### CHOOSE YOUR CLASSROOM

#### A.

##### **Faculty of Cybernetics & Modern Technologies:**

Number of students accepted in one year: 14

#### B.

##### **Faculty of Business & Diplomacy**

Number of students accepted in one year: 14

#### C.

##### **Faculty of Science & Medicine**

Number of students accepted in one year: 14

#### D.

##### **Faculty of Design & Engineering**

Number of students accepted in one year : 14

##### **Nationality of teachers:**

English, German, Slovak, Spanish, Chinese, Korean and Russian Native teachers

##### **Private lessons teachers:**

Japanese, Arabic, Latin, Italian , French

##### **Degree of teachers:**

University degree in Elementary or High School Education major.

Architecture workshop



## ELEMENTARY 3 STAFF

|  |           |
|--|-----------|
| <b>State curriculum Teachers</b>         |           |
| Number of Instructors                    | 4         |
| Number of German teachers                | 4         |
| <b>Native language Teachers</b>          |           |
| Number of Spanish Teachers               | 2         |
| Number of Chinese Teachers               | 2         |
| Number of English Teachers               | 2         |
| Number of Russian Teachers               | 1         |
| Number of Korean Teachers                | 1         |
| <b>Faculty Teachers</b>                  |           |
| Specilized faculty teachers              | 4         |
| <b>Sports Teachers</b>                   |           |
| Number of foreign sport teachers         | 4         |
| <b>Office &amp; Other Staff</b>          |           |
| Director of 1-3 grade elementary school  | 1         |
| Accountant                               | 1         |
| Receptionist - Customer service & Events | 2         |
| HR & Immigration                         | 1         |
| Cleaning lady & Technician               | 4         |
| Chef for Breakfast, Snacks & Deserts     | 3         |
|  | <b>36</b> |

## ELEMENTARY ROOMS

|   |  |                          |                                       |
|---|--|--------------------------|---------------------------------------|
| <b>STUDY ROOMS - ELEMENTARY 3</b>                   |  | m <sup>2</sup>           | Designed for given number of children |
| State curriculum classrooms                         | Literature & Languages / Mathematics & Biology             | 50                       | 14                                    |
|   | Literature & Languages / Mathematics & Physics             | 50                       | 14                                    |
|   | Literature & Languages / Mathematics & History & Geography | 50                       | 14                                    |
|   | Literature & Languages / Mathematics & Chemistry           | 50                       | 14                                    |
| Subjects in languages                               | Reading & Writing / Drawing & Painting                     | 70                       | 14                                    |
|   | Reading & Writing / Human science & Business               | 70                       | 14                                    |
|   | Reading & Writing / Geography / History / Travell          | 70                       | 14                                    |
|   | Reading & Writing / Psychology                             | 70                       | 14                                    |
| Faculty classrooms                                  | Cybernetics classroom                                      | 90                       | 14                                    |
|   | Business classroom   | 90                       | 14                                    |
|   | Science classroom  | 90                       | 14                                    |
|   | Design classroom   | 90                       | 14                                    |
| <b>Total area</b>                                   |  | <b>840 m<sup>2</sup></b> |                                       |
| <b>WASH ROOMS &amp; HYGIENE SPACES ELEMENTARY 3</b> |  | m <sup>2</sup>           | Designed for given number of people   |
| RECEPTION wash room / for 2 children and 2 adults   |  | 15                       | 4                                     |
| GIRLS wash rooms area A / 4 Toilets & basins        |  | 15                       | 4                                     |
| GIRLS wash rooms area B / 4 Toilets & basins        |  | 15                       | 4                                     |
| GIRLS wash rooms area C / 4 Toilets & basins        |  | 15                       | 4                                     |
| BOYS wash rooms area A / 4 Toilets & basins         |  | 15                       | 4                                     |
| BOYS wash rooms area B / 4 Toilets & basins         |  | 15                       | 4                                     |
| BOYS wash rooms area C / 4 Toilets & basins         |  | 15                       | 4                                     |
| Employee Wash room / Male Toilets 3 pieces          |  | 15                       | 3                                     |
| Employee Wash room / Female Toilets 3 pieces        |  | 15                       | 3                                     |
| Director and guest toilets / 2 pieces               |  | 9                        | 2                                     |
| <b>Total area</b>                                   |  | <b>144 m<sup>2</sup></b> |                                       |

| RECEPTION & OFFICES - ELEMENTARY 3   | m <sup>2</sup>           | Designed for given number of people |
|--|--------------------------|-------------------------------------|
| Reception / Waiting room for parents, and open Office space for computers for 3 employees / Design : in the style of hotel reception | 50                       | 8                                   |
| Directors office / including meeting room Location / Near Reception  | 54                       | up to 12                            |
| HR office / Immigration Director & accountant office / Near Director Room  | 18                       | 4                                   |
| Meeting room for teachers and parents, staff meetings, welcoming guests / Next to Director's room                                    | 60                       | 30                                  |
| <b>Total area</b>  | <b>182 m<sup>2</sup></b> |                                     |



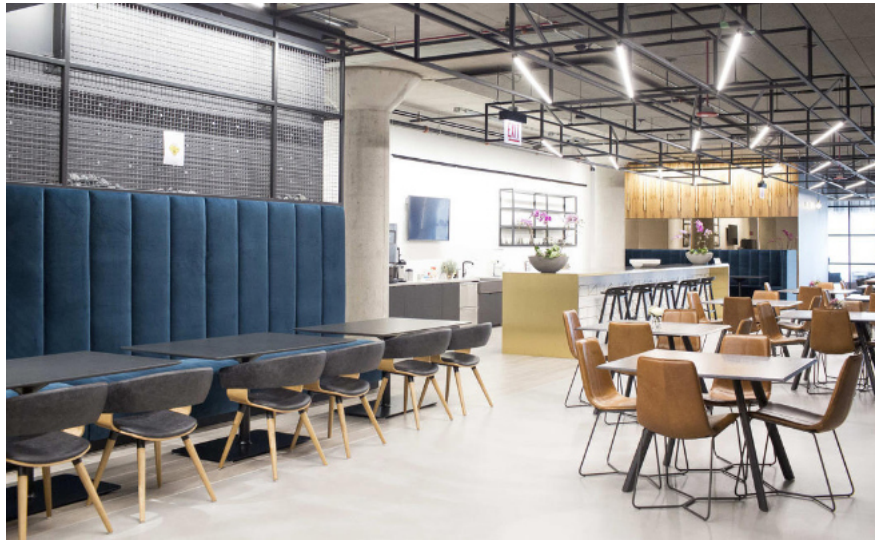
| SPORTS FACILITIES - ELEMENTARY 3                | m <sup>2</sup>           | Designed for given number of people |
|---|--------------------------|-------------------------------------|
| <b>SUPER GYMNASIUM 18x36</b>                    | 648                      | 28                                  |
| Gymnasium tool storage                          | 20                       | 28                                  |
| Changing room for children, showers and toilets | 90                       | 28                                  |
| <b>Total area</b>                               | <b>758 m<sup>2</sup></b> |                                     |



| ROTATION FOR SUPER GYMNASIUM 18x36 |  |              |          |              |          |
|------------------------------------|--|--------------|----------|--------------|----------|
|                                    | Mon  | Tue          | Wed      | Thur         | Fri      |
| 8:00 - 9:30                        | 9AB/half                                   | School Games | 9AB/half | School Games | 7AB      |
| 9:30 - 11:15                       | 9CD/half                                   |              | 9CD/half |              | 7CD      |
| 11:15 - 12:45 lunch                |  |              |          |              |          |
| 13:00 - 14:30                      | 8AB  |              | 8AB/half |              | 8AB/half |
| 14:45 - 16:15                      | 8CD  |              | 8AB/half |              | 8AB/half |
| 16:15 - 18:00                      | Volleyball Club , Basketball club          |              |          |              |          |
| 18:00 - 21:00                      | Public use with Accomodation cards Seiberg |              |          |              |          |

| <b>STORAGE ROOMS &amp; Lockers<br/>ELEMENTARY 3</b>  | m <sup>2</sup>           | Designed for given<br>number of people | <b>TEACHER's OFFICES - ELEMENTARY 3</b>   | m <sup>2</sup>             | Designed for given<br>number of people |
|--|--------------------------|--|---|----------------------------|--|
| Lockers and Changing space for children on arrival / possibly to use also hallway area   | 50                       | 168                                    | Teachers office Literature & Languages / Mathematics & Physics / 2 teachers / Located in between 2 classrooms / hidden closet space | 21                         | 2                                      |
| Space for cleaning dirty shoes & storage space for drying winter jackets when coming from outdoors or from playground / hidden - not visible to school visitors. | 25                       | 100 - 120                              | Teachers office Literature & Languages / Mathematics & Physics / 2 teachers / Located in between 2 classrooms/ hidden closet space  | 21                         | 2                                      |
| Storage space for Education documents, teachers' books, & prints   | 20                       |  | Teachers office Geography & History / Nature plants animals / 2 teachers / Located in between 2 classrooms/ hidden closet space     | 21                         | 2                                      |
| Storage space for seasonal furniture and seasonal decoration   | 70                       |  | Teachers office Chemistry & Science / Finance / 2 teachers / Located in between 2 classrooms  | 21                         | 2                                      |
| External & Part time employee changing room and Employee safety lockers  | 30                       | 43                                     | Teachers office Sports Teacher office / Cooking Teacher office 2 teachers / Located in between 2 areas / hidden closet space        | 21                         | 2                                      |
| Cleaning lady room 1 / including storage for tools and hygienic items  | 12                       | 1                                      | Teachers office - Sports Teachers / Located by the Sports Facility area   | 21                         | 2                                      |
| Cleaning lady room 2 / including storage for tools and hygienic items  | 12                       | 1                                      | Teachers office ART / 2 teachers / Located in between 2 classrooms / hidden closet space  | 21                         | 2                                      |
| Archive / Next to HR room  | 20                       |  | Teachers office Computers & Robotics / Located in between 2 classrooms / hidden closet space  | 21                         | 2                                      |
| Printing room  | 12                       |  |   |                            |  |
| <b>Total area</b>  | <b>251 m<sup>2</sup></b> |  | <b>Total area</b>   | <b>168 m<sup>2</sup></b>   |  |
|  |                          |  | <b>Hallways &amp; Technical spaces</b>  | <b>546 m<sup>2</sup></b>   |  |
|  |                          |  | <b>Elementary 3 Building Area</b>   | <b>2 889 m<sup>2</sup></b> |  |
|  |                          |  | <b>Out of which Sports Facility Area</b>  | <b>758 m<sup>2</sup></b>   |  |





## ELEMENTARY 3 KITCHEN SPACES

| KITCHEN & CAFETERIA                              | Number of seats for children | Number of seats for adults |
|--|------------------------------|----------------------------|
| Kitchen serving 168 children & 46 adults         |                              |                            |
| Kitchen storage                                  |                              |                            |
| Cafeteria for Elementary 3                       | 2 x a day 84                 | 2 x a day 23               |
| Cafeteria for Teachers & Headquarters            |                              | 17                         |
| Food Lounges - 2                                 |                              |                            |
| <b>Total area</b>                                | <b>262 m<sup>2</sup></b>     |                            |
| <b>Hallways &amp; Technical spaces</b>           |                              | <b>113 m<sup>2</sup></b>   |
| <b>Elementary 3 kitchen spaces building area</b> |                              | <b>486 m<sup>2</sup></b>   |

### Board of Directors & Office members

number of employees

#### Seiberg Top management

|                     |   |
|---------------------|---|
| General Director    | 1 |
| Reception office    | 1 |
| Financial Director  | 1 |
| Financial Assistant | 1 |

#### Seiberg International School Top management

|  |   |
|--|---|
| Seiberg School Director  | 1 |
| Education director for religious studies                             | 1 |
| Summer School Director   | 1 |
| Summer school , Leadership International programs & Trips organizers | 2 |
| Marketing & Graphic design   | 1 |
| HR & Immigration director  | 1 |
| Computer and software maintenance                                    | 1 |

#### Seiberg Restaurant management

|                                  |   |
|----------------------------------|---|
| Cafeteria & Restaurants director | 1 |
| Elementary school chef           | 3 |
| Elementary school cooks          | 3 |
| Employee cafeteria & Lounges     | 4 |



## NUTRITION & DINING

Based on our ethical profile, Seiberg school provides a healthy lifestyle diet that is rich in vitamins, fiber, minerals, and quality food prepared from fresh ingredients. A child can enjoy breakfast in a room with other children right in our school. Breakfast and lunches are in the form of a buffet. Besides this, there are several breaks for tea and snacks. Fruit and drink are available throughout the day.

All meals are served in the form of a buffet and placed at the eye level so the child can choose the food according to their taste. The child thus learns to have a positive relationship to the meal, since they select themselves and can react independently to the needs of their body. This is especially ideal for children with digestion problems and they are not able to express his/her difficulties; hence they choose a meal that is more digestible. By giving the child this choice to independently respond to their body needs is one of the most important principles of School of Seiberg and an important part of their personal growth.

### Breakfast & Snacks:

Seidberg provides a hot or cold breakfast; such as pastries, cereals, eggs, spread, cheese, yogurt, milk and fruit juices. Snacks are usually in the form of fresh fruit or vegetables with a side dish and snacks take the form of energy delicacies; such as pudding, fruit salad, dessert, cake, international food, corn porridge, etc.

### Lunch & dinner:

For lunch, children are required to have soup and there is a minimum of two options for the main meal. In the case where the child requires having both meals, first he/she will be given the first meal option and then a vegetarian meal or dessert. Quality fish like Salmon or Tuna is on the menu at least twice a week. There is also a selection of beef, rabbit, turkey or beef. Children may also have a vegetarian or alternative meal not on the menu based on the request of parents. Dinner is only available on request for those children who stay in the school until 18:00.

### Low quality food avoidance:

Seiberg school cafeteria avoids low quality foods with low nutrition value. School does not serve chicken more than 2 times a month. This is a response and reaction to the poor living conditions, cruelty and antibiotic supplements in the food that is connected mostly to chicken and pork. Our school also uses only sea salt and cane sugar or honey.

### International Food:

Children begin to learn how to eat properly, by learning manners at the table. Ask for one more dish if they have enjoyed the meal or are still hungry. Food for little children is chosen by teachers from the buffet, but in the presence of the child and after consulting with him/her. Every week there is international food on the menu, so children acquire names and tastes for unknown meals from other countries, and they get to know the way the food is prepared and served.

### Serving water :

Water is only served in ceramic cups as they maintain better water quality and is considered safer than any other material.

## School Restaurants & Evening Restaurants

### ICE CREAM & COFFE SHOP

Available space in m<sup>2</sup>

Ice Cream , Cake & Coffee shop for Rent

from 50 to 220 m<sup>2</sup>

Ice Cream shop can use the benefit of building services like Children care area, great parking access, Toilets for staff and customers.



### TEACHER'S LOUNGE BUFFET & Fruit Space

Available space in m<sup>2</sup>

Kitchen & Restaurant space for Rent

from 50 to 220 m<sup>2</sup>

Teachers of Seiberg will be offered their own private lounge space for their relaxation, reading of the newspapers, watching news and having a small snacks and fruits during their longer breaks while chatting with their colleagues





THIS MONTH'S CLASS COMPETITION:  
WHICH BUSINESS WOULD YOU OPEN  
THIS YEAR IN A LITHUANIA?

Classes at Seiberg are required to include at least one major project per semester in which students are given a specific, real-life question or problem to solve that draws on creativity, reading comprehension, writing, applied maths and sciences, and group participation. Current events and culture are brought into the classroom in a variety of forms so that the students know who they are in relation to the world and are enthusiastic and confident about participating in it.



## DON'T TALK FOR A WHILE

It took more than 9 years to arrive to concepts, ideas and to try out our methodology with more than 200 students that can now fluently speak 3 to 5 languages on native level.

Now we introduce a project of international significance.

We understand that people have many views, opinions and strategies on how to improve schools or education. But at Seiberg it all comes down to one thing :

We enhance what you see as a gift in your child.

## ENHANCE A TALENT IN YOUR CHILD

To understand child's talent we must provide Multiple education formats :

- Visual-Spatial - child thinks in terms of physical space and is very aware of their environments. Students are allowed to draw, solve puzzles, look at maps and physical imagery in order to learn a given topic. Models, charts, photographs and videos are excellent supplementary tools.
- Bodily-kinesthetic - child is extremely aware of and communicates through the body. They like movement, making things, touching, and are taught through physical activity, hands-on learning, roleplaying, dancing. Real, tactile objects are instrumental learning tools.
- Musical - child is inclined towards rhythm and is sensitive to sound. Lyrics, speaking rhythmically, tapping out time will be incorporated into lessons for better learning. Tools include musical instruments, music, multimedia.
- Interpersonal - child is socially aware and active with others. These students learn through interaction, through group activities, seminars, dialogues.
- Intrapersonal - child is self-aware and self-reliant. They learn best through independent study and introspection. Tools include books and privacy.
- Linguistic - child is inclined towards languages with highly developed auditory and linguistic skills. They learn best by playing word games, reading books, creating poetry or stories. Tools included in the class are computers, games, multimedia, books, and lecture.
- Logical -Mathematical - child is reasonable and calculating, thinks in abstracts and concepts. They learn best through experiment/investigations, puzzles, logic games.



## ONE TEACHER

One teacher has 1 lifetime to teach 4 generations of children. There is no other work, that results in more dedication to one child's future as the work of elementary school teacher.

The team of Seiberg is created of people that work from dedication to what we stand for:

- We aim at creating intellectually stimulating, child - centered environment
- We encourage students' individual development, independent thought and creative thinking
- Our students make input into the curriculum, because teachers respect the different pace and interests of each child
- We create learning experiences that discover, develop and enhance each child's unique gifts and multiple intelligences
- In addition to academic achievements, we promote children's physical and emotional development and sense of social responsibility.
- We lead students to become independent learners, be able to solve problems, create solutions and set priorities
- We expose students to different cultures and languages
- We keep students informed of local and global issues
- We encourage natural curiosity and questioning attitude in children
- We aim at developing enquiring minds
- We will be friends with our students forever. We will watch them grow

# Medical Spaces of the School

## PEDIATRICIAN ROOM

Available space in m<sup>2</sup>

Pediatrician's room for rent

from 26 to 60 m<sup>2</sup>

Family Medical space of Seiberg consists of 4 medical offices which include Reception, Waiting rooms, Kitchen space for employees, Storage, Toilets for employees and clients and other Technical spaces.

For information please contact [seiberg@skycontinent.com](mailto:seiberg@skycontinent.com)



## PSYCHOLOGIST ROOM

Available space in m<sup>2</sup>

Psychologist room for rent

from 26 to 60 m<sup>2</sup>

Family Medical space of Seiberg consists of 4 medical offices which include Reception, Waiting rooms, Kitchen space for employees, Storage, Toilets for employees and clients and other Technical spaces.

For information please contact [seiberg@skycontinent.com](mailto:seiberg@skycontinent.com)



# Medical Spaces of the School

## SPEECH THERAPY ROOM

Available space in m<sup>2</sup>

**Speech therapy room for rent**

from 26 to 60 m<sup>2</sup>

Family Medical space of Seiberg consists of 4 medical offices which include Reception, Waiting rooms, Kitchen space for employees, Storage, Toilets for employees and clients and other Technical spaces.

For information please contact [seiberg@skycontinent.com](mailto:seiberg@skycontinent.com)

## FAMILY DOCTOR ROOM

Available space in m<sup>2</sup>

**General practitioner - Family doctor room for rent**

from 26 to 60 m<sup>2</sup>

Family Medical space of Seiberg consists of 4 medical offices which include Reception, Waiting rooms, Kitchen space for employees, Storage, Toilets for employees and clients and other Technical spaces.

For information please contact [seiberg@skycontinent.com](mailto:seiberg@skycontinent.com)





## OTHER SHOPS & SERVICES

### BOOKSHOP & MAGAZINE SHOP

Available space in m<sup>2</sup>

Bookshop & magazine shop for rent

from 40 to 200 m<sup>2</sup>

For information please contact [seiberg@skycontinent.com](mailto:seiberg@skycontinent.com)



### FLOWER SHOP

Available space in m<sup>2</sup>

Flower shop space for rent

from 20 to 50 m<sup>2</sup>

For information please contact [seiberg@skycontinent.com](mailto:seiberg@skycontinent.com)



## OTHER SHOPS & SERVICES

### POST OFFICE SPACE

Available space in m<sup>2</sup>

Post office space for rent

from 26 to 80 m<sup>2</sup>

For information please contact [seiberg@skycontinent.com](mailto:seiberg@skycontinent.com)



### PICK-UP POINT DHL, UPS

Available space in m<sup>2</sup>

Pick-up point space for rent

from 26 to 46 m<sup>2</sup>

For information please contact [seiberg@skycontinent.com](mailto:seiberg@skycontinent.com)



# OTHER SHOPS & SERVICES

## HAIR SALON

Available space in m<sup>2</sup>

Hair design salon space for rent

from 26 to 100 m<sup>2</sup>

For information please contact [seiberg@skycontinent.com](mailto:seiberg@skycontinent.com)



## DRY CLEANING

Available space in m<sup>2</sup>

Dry cleaning space for rent

120 m<sup>2</sup>

For information please contact [seiberg@skycontinent.com](mailto:seiberg@skycontinent.com)



near by

# SEIBERG



### Slovak National Museum

Distance within 50 minutes

The Slovak National Museum is the top state institution responsible for preparing museum collections, facilitating scientific research and organizing cultural and educational events in this field in the Slovak Republic. The Slovak National Museum operates one specialised public archive and a scientific library. It administers hundreds of monuments, including national cultural monuments.



### Slovak National Gallery

Distance within 50 minutes

The collection of the SNG includes now about 70,000 items, many of which are part of the national cultural heritage. The Gallery fulfils an invaluable role in the area of protection and care for monuments of tangible and intangible cultural heritage (several buildings where the Gallery resides are national monuments).

Near by

## SPORTS HAVENS



**X Bionicle Sphere – Slovak Olympic Training Center**

**Distance within 30 minutes**

Sports area of more than 1,000,000 m<sup>2</sup> provides professional conditions for the performance of 27 different Olympic disciplines and accommodation for 1200 athletes. Residents of Seiberg can use the facility to practice Horse Riding, Gymnastics, Swimming or use the modern Gym on 3 floors.



**Divoka Voda – Olympic Rafting center Vodne Dielo Cunovo**

**Distance within 30 minutes**

Rafting is accessible not only to professional rafters but to the public as well. Experience a team and adrenaline activity at the same time!



**Golf Bernolakovo, Slovakia**

**Distance within 30 minutes**

Golf course of 9 holes and 3600 m long (par 62) is located on protected land area with Baroque castle and two hundred years old trees. The golfer must apply a wide range of golf hits. This small golf course can surprise even the best players.



**Golf Club Hainburg, Austria**

**Distance within 30 minutes**

Golf club is situated between the foothills of the Braunsberg and the nature reserve „Donau-Auen“. Golfer views change with one golf round completely and 3 holes head directly into forest of the Danube. Holes 10 and 18 are multileveled on the foothills of the Braunsberg with its typical dry grassland.



**Hockey stadium Ondreja Nepelu**

**Distance within 30 minutes**

If you wish to go ice-skating or watch national hokey tournament, you will have three hokey stadiums in the distance from 10 to 17 minutes from Seiberg. The biggest Hokey Stadium of Onder Nepela was reconstructed in year 2011 with new capacity of 10 000 seats .



**Semmering Ski Resort**

**Distance within 90 minutes**

The ski resort Stuhleck Semmering is a true winter highlight, a paradise for every ski and snow lover. Enthusiasts can ski at night on the slopes or experience Boarder X fun park, carving run, 5 km of natural toboggan-runs, ice rink, curling, prepared walks, an indoor tennis center, indoor swimming pool, sauna and super events for runners and Apres-ski.



**Neusiedl am see – Yachting, Sailing, Windsurfing**

**Distance within 30 minutes**

Lake Neusiedl See is one of the best areas for wind-surfing and sailing in Europe. Proof is in the international events held here on the largest steppe lake in Central Europe: record speeds, loops and tricks – this is the place. And yachts people too come here in their thousands. No wonder the area is a dream venue for beginners, more advanced sailors and professionals alike. If you wish to take it easy, you can rent a small boat, swim, or just laze on the beach near by beautiful restaurants.



Near by

# ART HAVENS



**Museum of Art Vienna -  
Kunsthistorisches museum**

**Distance within 50 minutes**

Vienna's Kunsthistorisches Museum (KHM), one of the world's foremost fine arts museums.



**Austrian Museum of Applied Arts -  
Contemporary Art**

**Distance within 50 minutes**

In MAK museum for design, you can see precious handcrafted artworks of the Wiener Werkstätte, bentwood furniture by Thonet and highlights of Art Nouveau.



**MUMOK Museumsplatz  
Vienna**

**Distance within 50 minutes**

The striking concrete facade of the MUMOK with its powerful presence makes you want to explore its interior as soon as you come by. Inside is a fluid collection, focusing mainly on pieces by artists from the 20th and 21st centuries, spotlighting POP ART and works that explore Austria's complex political and social history.



**Albertina Museum**

**Distance within 50 minutes**

The Albertina is a museum in the Innere Stadt (First District) of Vienna, Austria. It houses one of the largest and most important print rooms in the world with approximately 65,000 drawings and approximately 1 million old master prints, as well as more modern graphic works, photographs and architectural drawings.

Near by

## NATURE HAVENS



### Botanical garden – Garden under University of Vienna

Distance within 30 minutes

It covers 8 hectares and it immediately adjacent to the Belvedere Gardens. It is a part of the University of Vienna. The gardens currently contain more than 11,500 species of plants, including well documented tropical plants, particularly of such families as Annonaceae, Rubiaceae, Gesneriaceae, Bromeliaceae or Orchidaceae.



### Bratislava Botanical Gardens of Comenius University Slovakia

Distance within 30 minutes

The garden is the home of around 5,000 plant species, especially from exotic areas. Its most beautiful parts include a rose garden that covers half a hectare and features, most importantly, up to 150 hybrid rose varieties. Greenhouses display tropical and subtropical plants, cactuses, succulent plants, palm trees, fern plants, flora from Australia and scores of other exotic plants.



### Donau Auen

Distance within 30 minutes

Donau-Auen National Park preserves the last remaining major wetlands environment in Central Europe. Over 800 vascular plant species and more than 30 mammalian, 100 breeding bird, eight reptilian and 13 amphibian species – not to mention around 60 fish species – live on the National Park grounds. Biodiversity found here is unique in all Central Europe.





**Steppe lake**  
**Neusiedl Seewinkel National Park**

**Distance within 20 minutes**

Steppe lake is the largest lake in Austria is surrounded by a 178 km<sup>2</sup>-belt of reed beds, the second-largest reed plantation in Europe. It is home to many rare animals and hundreds of bird species. The lake of 320 km<sup>2</sup>, of which about 4/5 is on Austrian soil and 1/5 in Hungary is hardly ever deeper than 180 cm, the water warms up in the summer months to a temperature of 30 degrees. Amazing swimming pool experience in natural surroundings!

Half of the Seewinkel National Park is a "natural area" which is not exploited in any way.



**Neusiedl am See**

**Distance within 20 minutes**

Town with Pannonia Cuisine is a popular holiday destination for sailing, surfing, bathing, or biking through idyllic vineyards with grapes that flourish on 6,675 hectares.

With mild climate and over 2000 hours of sunshine per year the landscape provides a natural habitat for a unique diversity of Pannonian, Alpine and Mediterranean flora and fauna. The town is positioned in a rich archaeological heritage and well-preserved buildings and occupied by various ethnicities.



**Seegrotte Hinterbrühl**

**Distance within 30 minutes**

The Seegrotte, near Hinterbrühl, Austria, is a cave system with a large grotto located under a former gypsum mine. It was closed in 1912 after the mine flooded with 20 million liters of water. It became a tourist attraction after 1930 and has been one ever since.



**Amethyst Welt Maissau**

**Distance within 1 hour and 30 minutes**

The Amethystwelt Maissau is a museum with an adjoining theme and leisure park. Located in the municipality of Maissau and was erected over one of the largest accessible amethyst veins anywhere in the world. This geographical feature was discovered by chance during stone quarrying works that took place as long ago as 1845.

Near by

# CASTLES



**Belvedere Vienna Austria**

**Distance within 60 minutes**

The Belvedere is a historic building complex consisting of two Baroque palaces (the Upper and Lower Belvedere), the Orangery, and the Palace Stables. The buildings are set in a Baroque park landscape in the third district of the city, on the south-eastern edge of its center. It houses the Belvedere museum. The grounds are set on a gentle gradient and include decorative tiered fountains and cascades, Baroque sculptures, and majestic wrought iron gates. The Baroque palace complex was built as a summer residence for Prince Eugene of Savoy.



**Hofburg Vienna Austria**

**Distance within 60 minutes**

Until 1918 this castle was the political center of Austria's monarchy. It was the place where the Wiener Congress met, and still is the center for political business, and the official seat of the president of the Republic of Austria. Other cultural institutions located here are : The Spanish Hofreitschule, the world wide known court's school for its horses, or the Austrian National Library.



**Lednice Castle, Czech Republic**

**Distance within 60 minutes**

Neo-Gothic reconstruction in the 19th century, has created a residence surrounded by one of Europe's largest parks (almost 200 ha), in which the visitor finds the Palm House, the Venetian fountain, Roman aqueduct, the Chinese Pavilion, artificial ruins minaret and Johns Castle. Thanks to a unique connection with the monuments surrounding human nature was formed in 1996 by the whole Lednice-Valtice UNESCO World Heritage Site.



### Hluboka Castle

**Distance within 210 minutes**

Originally a royal castle, Hluboka was established in the 13th century by King Premysl Otakar II. Neo Gothic appearance based on the English castle of Windsor. Hluboka Castle has had four major reconstructions. The reconstruction was finished in 1871; the family created 140 richly decorated rooms, eleven towers and bastions and succeeded in turning it into a Neo Gothic gem. The castle is surrounded by a gorgeous English style castle park.



### Schonbrunn Palace, Vienna

**Distance within 50 minutes**

Schönbrunn Palace (Schloss Schönbrunn) was built in the early 18th century in a beautiful park-like setting and one of Austria's leading attractions.



### Bojnice Castle

**Distance within 135 minutes**

Gazing at fairy-tale Bojnice Castle stirs fantasies of knights and maidens in even the weariest travelers. Only foundations remain of the original 12th-century fortification, but an early-20th-century reconstruction by the Palfy family took inspiration from the castle of France's Loire Valley, lifting Bojnice to the neo-baroque splendor that stands today.



Near by

## ENTERTAINMENT HAVENS



### Prater Amusement Park, Vienna

#### Distance within 40 minutes

Old-fashioned Amusement Park is open to all visitors who can enter the park directly from the city of Vienna without any boarders. Walk through the park for free or get a ride on roller coasters, ghost trains, merry go rounds or play in the buildings designed for fun. With almost no waiting time for the rides, cotton candy, sweets and other traditional foods, Prater is wonderful evening choice for you and your friends in the warm months of the year.



### Slovakia Ring

#### Distance within 40 minutes

Motor sports complex offers unique opportunity for clients who wish to master their driving skills, experience the real speed and improve their techniques with as much excitement and freedom that racing can offer. The complex meets all FIM and FIA criteria for hosting major international motor sport events like FIA WTCC, FIA GT Series, FIA GT1 World Championship, ADAC GT Masters, Grand Prix of Slovakia, Alpe Adria Championship, FIM Endurance World Championship, FIA CEZ Rallycross and King of Europe.



### Zoo Vienna

Tiergarten Schoenbrunn Austria

#### Distance within 40 minutes

Founded as an imperial menagerie in 1752, it is the oldest continuously operating zoo in the world. Some Restaurants in the Zoo require prior booking due to their popularity.



### Zoo and Dinopark, Bratislava

**Distance within 40 minutes**

Zoo with more than 1,000 individual animal species the Zoo carries out more than 17 breeding programs within the framework of the European Endangered Species Program. The ZOO of Bratislava was among the first ones in Europe that successfully bred the young of lynx and in addition the zoo keeps the European Studbook for the Nubian Ibex.

Dinopark area in the ZOO area exhibits different Dinosaurs in their real size and nearby playground areas for children make this place a wonderful trip for any family.



### Slovak National Theater - SND Bratislava

**Distance within 40 minutes**

Established in 1920. Today it comprises drama, opera and ballet sections, each with its permanent professional company, with a central scene shop providing sets for all productions.

The companies of the Slovak National Theatre perform in two buildings, Historical building and new Theater building. The performances on all stages are held during the theatre season usually every day (Opera and Ballet) or except Monday (Drama). The theatre season lasts from early September until late June.



### Boat Sightseeing tours Vienna – Bratislava port

**Distance within 40 minutes**

Sightseeing boats have covered open top decks that allow a unique and unlimited view of the surrounding areas of the two capitals and Devin Castle.



### Vienna National Opera House - Wiener Staatsoper

**Distance within 40 minutes**

One of the leading opera houses in the world. Each season, the schedule features 350 performances of more than 60 different operas and ballets. Every night, you can witness world-class artists alongside the permanent ensemble members on the stage and at the conductor's desk, accompanied by a unique orchestra: the orchestra of Wiener Staatsoper, whose members at the same time make up the Vienna Philharmonic Orchestra.

# CAPITAL CITY BRATISLAVA

The most friendly shopping city in Europe



## Aupark Bratislava

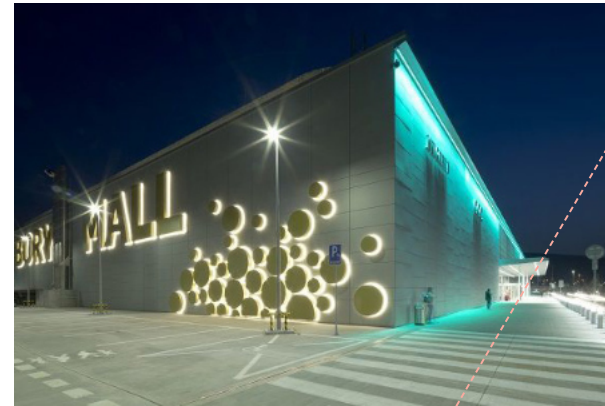
Distance within 15 minutes

Aupark shopping center is one of the top Bratislava destinations for stylish shopping and fun lovers. Aupark has 206 shops on 58,000 m<sup>2</sup> of total space, as well as 12 cinema theatres in a multiplex cinema Palace Cinemas. Open whole year around including Sundays.

## Eurovea Bratislava

Distance within 15 minutes

One of the most visited shopping centers in Bratislava, full of lounge bars with river views outside. Green promenade is one kilometer long enables visitors to access the Danube river foreshore way which lives until late night and makes Eurovea a real hotspot. This shopping center has 181 shops, 31 restaurants and large Cinemas. The center is a neighbor with the hotel Sheraton and New National Theater. Open whole year around including Sundays.



## Bory mall Bratislava

Distance within 15 minutes

The newest shopping mall in Bratislava with 196 shops is the best place for those who like to shop in the relaxed atmosphere. The shopping center is ideal for families that like to have fun playing interactive games in the mall's Children's world. Open whole year around including Sundays.

## Avion Shopping Bratislava

Distance within 15 minutes

Avion offers around 160 shops to its visitors. Their exclusive attractions include an Ice-Rink and many sports brands. The shopping center is located right next door to the biggest IKEA shop in the county. Open whole year around including Sundays.

Near by

# SHOPPING HAVENS



**Parndorf**  
**Biggest Austrian DESIGNER OUTLET**

**Distance within 20 minutes**

International brands, which range from casual fashion, sport, outdoor and shoes, up to accessories and lifestyle products. The more than 70 shops are managed by the brands themselves or their exclusive trade partners. Closed on Sundays.



**Mariahilfer Strasse Vienna**

**Distance within 50 minutes**

Mariahilfer Straße is the Vienna city's longest and most lively shopping street. The street is known for many out-of-the-ordinary shops and outlets. Closed on Sundays.



**Shopping City Süd Vienna**

**Distance within 50 minutes**

The Shopping City Süd (SCS) is a shopping center located in Vösendorf and Wiener Neudorf, south of Vienna, Austria. With a leasable area of 173,000 square meters, it is the biggest shopping mall in Austria. It contains over 330 shops. Closed on Sunday's and national holidays. Closed on Sundays.



**OC Olympia Brno – Czech Republic**

**Distance within 50 minutes**

Olympia is a substantial shopping and entertainment experience on the corner of the Brno city in Czech Republic with 186 shops and 25 restaurants open whole year around including Sundays except national holidays.

Near by

## CAPITAL CITY VIENNA

Distance from SEIBERG / **within 50 minutes**



## Awarded as best city to live in the world

Vienna remains the highest ranking city from January 2009 till 2018 in the world, providing resident and expatriates with high security, well-structured public transportation and a variety of cultural and recreation facilities.

Living or Studying in the Area of Seiberg will be a life-time experience in a country with the world top excellence in social and economic conditions, health, education, housing, safety and the environment with high potential for internship in one of the world's top companies





Near by

# HOLIDAY CITIES



**Prague**  
/ Capital city of Czech Republic

Distance  
**3 hours 30 minutes**



**Salzburg Austria**

Distance  
**3 hours 30 minutes**



**Graz Austria**

Distance  
**2 hours 30 minutes**



**Budapest**  
/ Capital city of Hungary

Distance  
**2 hours**

Near by

# AIRPORTS



Vienna International Airport  
Distance within 50 minutes



Bratislava International Airport  
Distance within 20 minutes



Budapest International Airport  
Distance within 90 minutes



SEIBERG

**SEIBERG**



Res Monetariae AG  
Industriestrasse 21  
CH-6055 Alpnach Dorf  
Switzerland

[info@resmonetariae.com](mailto:info@resmonetariae.com)